

### Smoothies

Pash'n Shoot.....	£6.50
passion fruit, mango & pineapple	
Coco Loco .....	£6.50
coconut, pineapple, mango, lime & mint	
Strawberry Split.....	£6.50
strawberry & banana	
Berry-go-round .....	£6.50
blackberry, raspberry & strawberry	
Avo-go-go .....	£6.50
avocado, mango, spinach, broccoli, coconut, ginger & lime	

### Drinks

Bottle Drinks .....	£3.95
Coke, Diet Coke, Fanta, Sprite	
Redbull.....	£4.00
Tonic Water.....	£3.50
Soda Water.....	£3.50
Still Water Small .....	£3.70
Still Water Large .....	£4.95
Sparkling Small .....	£3.70
Sparkling Large .....	£4.95
Homemade Ayran .....	£4.95
Salgam .....	£3.50
Lemonade .....	£3.50
Ginger Beer.....	£3.50
Ginger Ale.....	£3.50
Juice .....	£2.95
Cranberry, Apple, Pineapple, Tomato	
Jug or Juice.....	£9.95
Cranberry, Apple, Pineapple, Tomato	
Jug of Ayran .....	£9.95

### Fresh Juices

Orange Juice .....	£5.50
Carrot, Lemon, Ginger.....	£5.50
Celery, Apple, Carrot.....	£5.50
Apple, Mint, Cucumber, Celery, Lime.....	£5.50
Orange, Carrot, Lemon, Ginger.....	£5.50

### Hot Drinks

Cappuccino.....	£3.80
Espresso .....	£3.20
Double Espresso .....	£3.40
Latte .....	£3.80
Turkish Coffee .....	£3.40
Hot Chocolate.....	£3.80
English Tea.....	£3.20
Earl Grey.....	£3.20
Fresh Mint Tea .....	£3.40
<i>Tea pot of fresh organic loose leaf tea:</i>	
Camomile .....	£4.50
Fruity Tea.....	£4.50
Green Tea.....	£4.50
Lemongrass and Ginger Tea.....	£4.50

Add (Whipped cream, vanilla syrup, gingerbread syrup 50p)

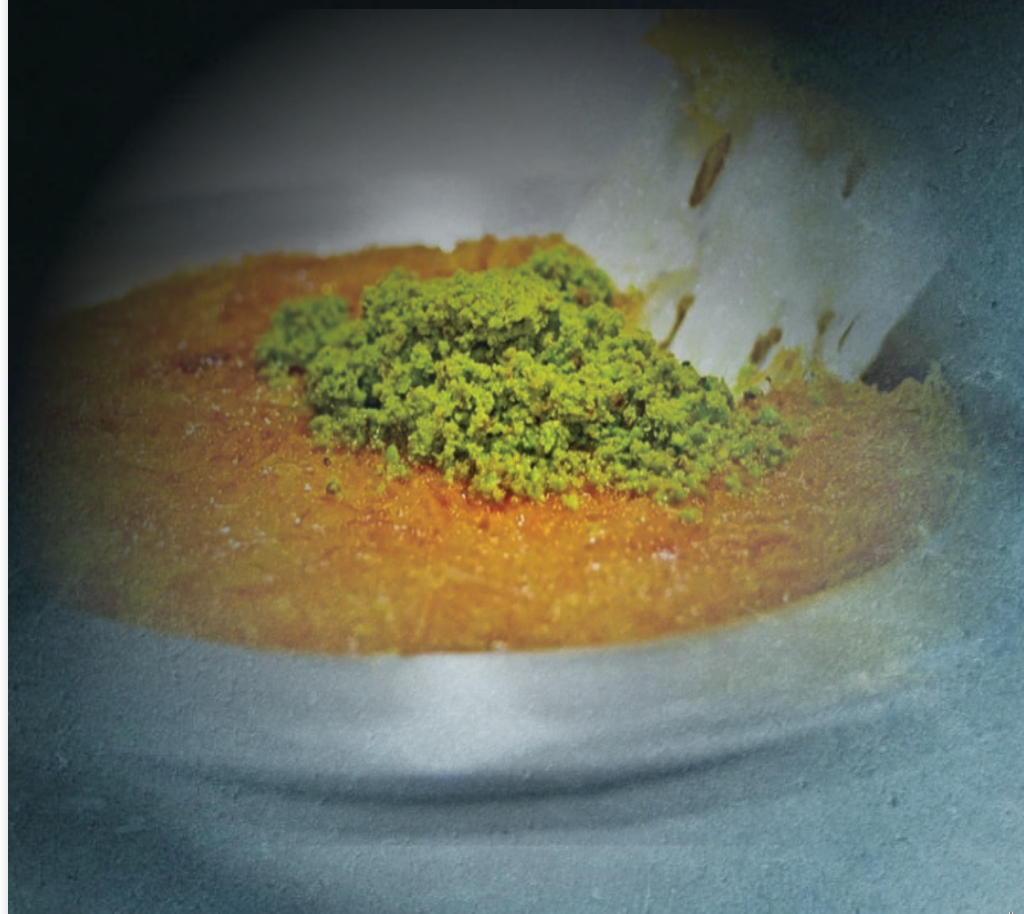
Disclaimer: Please note all our ice creams and desserts contain or may contain traces of the following allergens: *Nuts, Peanuts, Milk, Egg, Soya, Gluten, Sulphur Dioxide* A/C TKG09

# Güneş



(On request this can be ordered for a birthday celebration, with a birthday song)

## DESSERT MENU



## Turkish Desserts

### Baklava



Sweet pastry made of layers of phyllo dough, filled with nut and chopped pistachio, sweetened with syrup.

**£6.50**

Served with Ice Cream **£7.90**

### Sutlac (Rice Pudding)



Traditional Turkish oven baked rice pudding

**£5.00**

### Kunefe



Two layers of kadayif (Shredded fillo dough) filled with sweet cheese baked to perfection and served with home made syrup and pistachio nuts.

**£8.50**

Served with Ice Cream **£9.95**

## Cheesecakes

### Chocolate Cheesecake

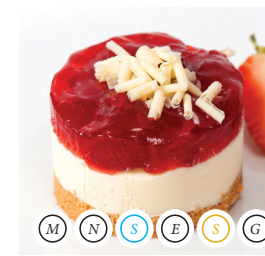


(M) (N) (S) (E) (S) (G)

Made with cream cheese, rich chocolate chips and a hint of vanilla. Topped with chocolate ganache and white curls.

**£5.90**

### Strawberry Cheesecake



(M) (N) (S) (E) (S) (G)

Set on a biscuit base, made with cream cheese and a hint of vanilla. Then topped with a strawberry fruit topping

**£5.90**

### Banoffee Cake



(M) (N) (S) (E) (S) (G)

A layer of thick toffee on a biscuit base with fresh sliced banana. Topped with banana mousse and whipped banana cream.

**£5.90**

## Chocolate Brownie



(M) (N) (S) (E) (S) (G)

Perfect for a chocolate lover.  
(Best served warm)  
Served with ice cream.

**£5.90**

## Coconut Supreme



(M) (N)

Cool & delicious coconut ice cream packed into real half coconut shell.

**£5.90**

## Heart Cake



(M) (N)

There is true love in this cake.  
Heart-warming flavour with vanilla ice cream and raspberry sauce to die for.  
(On request this can be ordered for a birthday celebration, with a birthday song)

**£6.90**

## Vegan Hazelnut Fondant



(N) (S) (G)

An iconic fondant with the liquid centre reinvented as a vegan version with no ingredients of animal origin. (served hot)

**£5.90**

## Glacio Maracuja Orange



(M) (N) (E)

Tropical sorbet blending orange and passion fruit juices, filled with orange pieces.

**£1.80 1 scoop**

## Ice Cream



(M) (N)

Choose 3 Scoops of Ice Cream from Vanilla, Strawberry or Chocolate Flavours.

**£5.95**

## Matka Kulfi

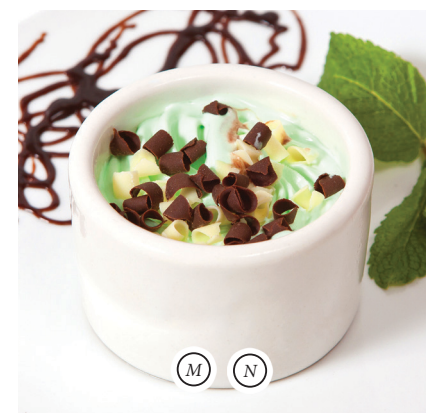


(M) (N)

Creamy and luscious dessert made with pistachio kulfi ice cream, containing saffron, topped with almond & pistachio nuts.

**£5.90**

## Midnight Mint



(M) (N)

Luxurious dreamy Mint flavoured ice cream in pot, rippled with gorgeous chocolate sauce, topped with curls.

**£5.90**

(M) Milk (N) Nuts (S) Sulphur (E) Egg (S) Soya (G) Gluten

(M) Milk (N) Nuts (S) Sulphur (E) Egg (S) Soya (G) Gluten